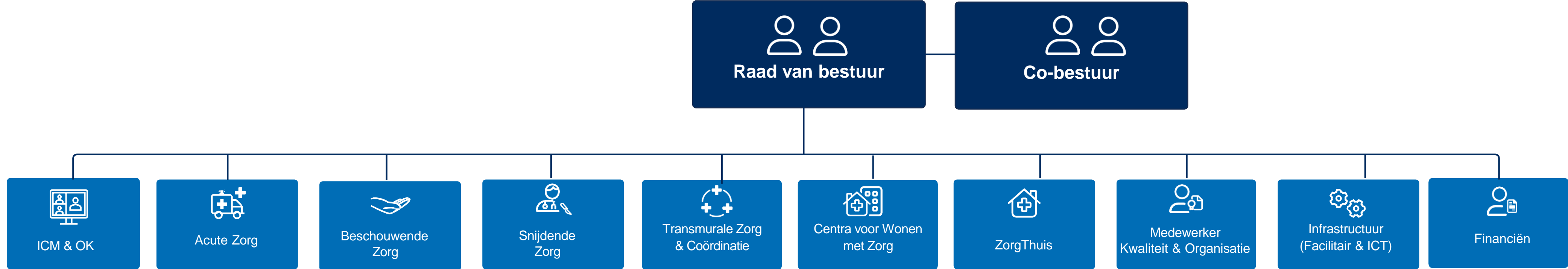
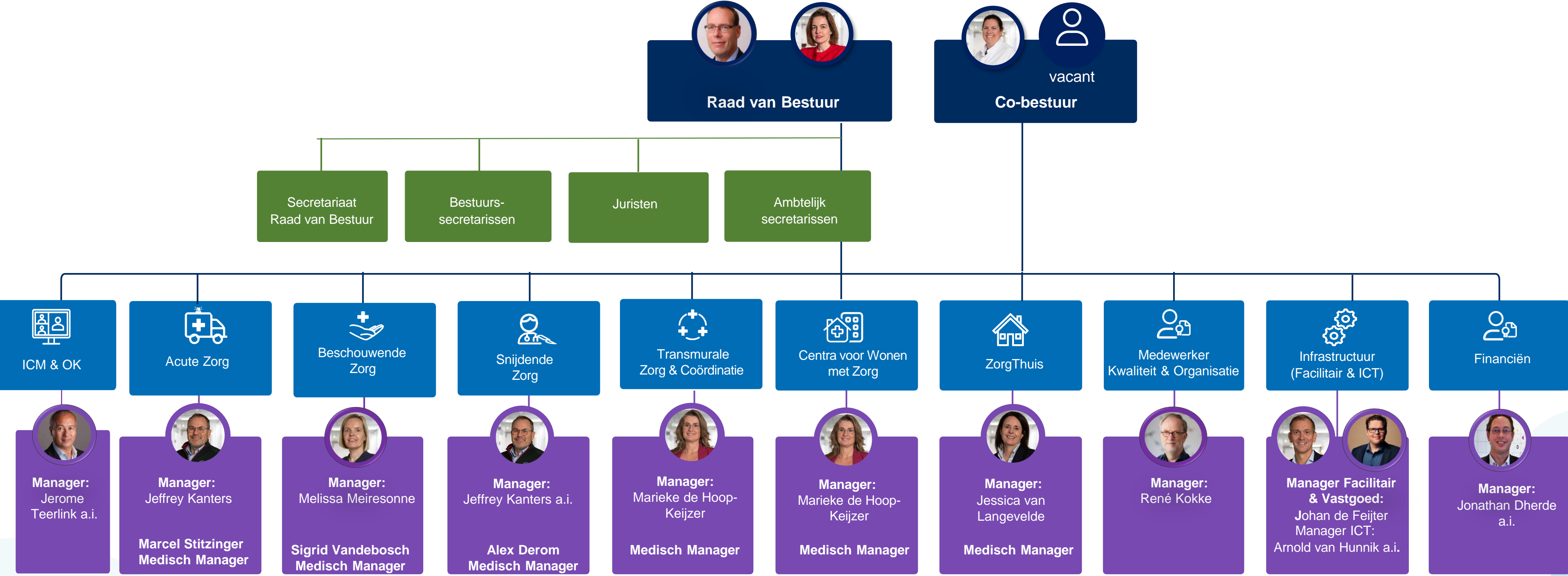
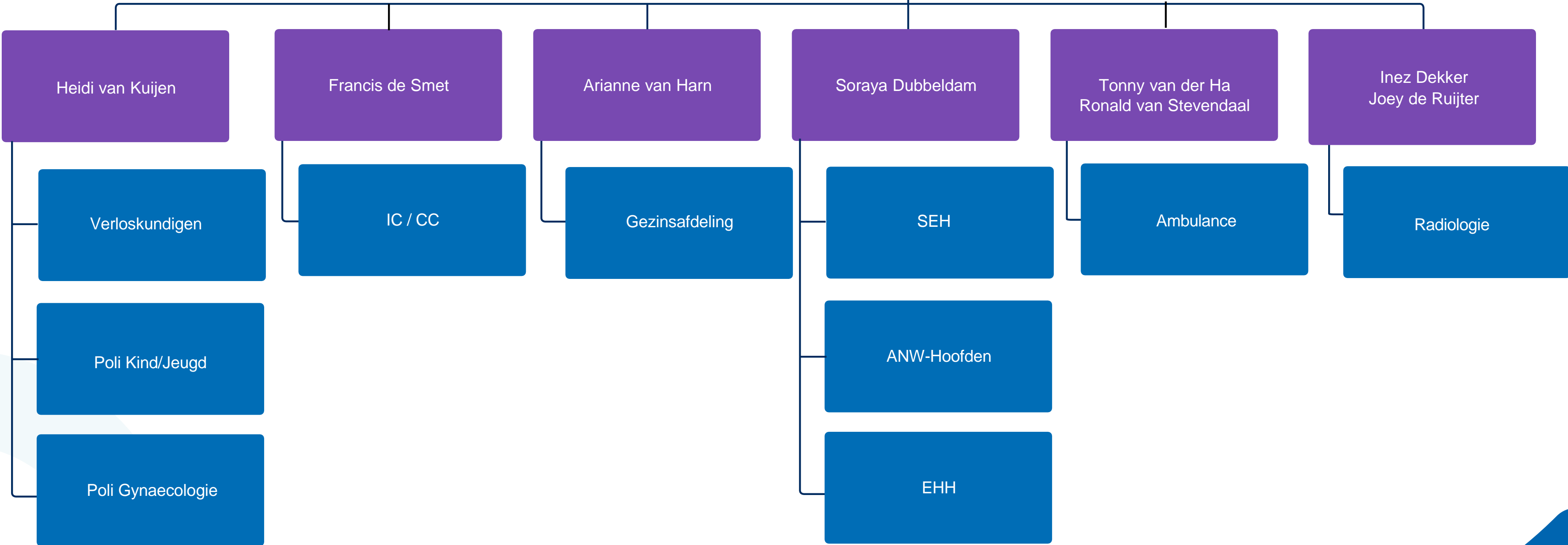


# Organisatiestructuur

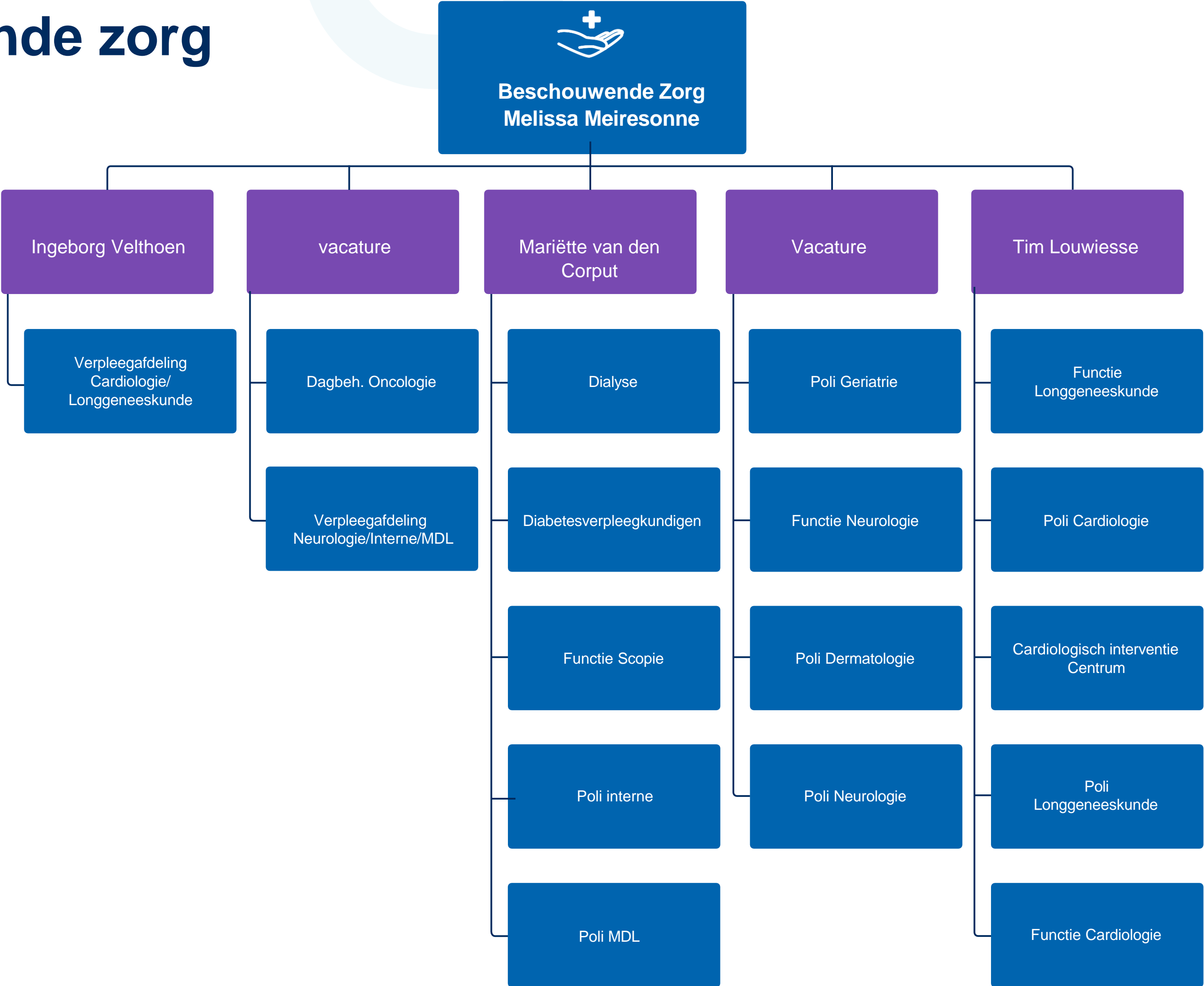


# Organisatiestructuur





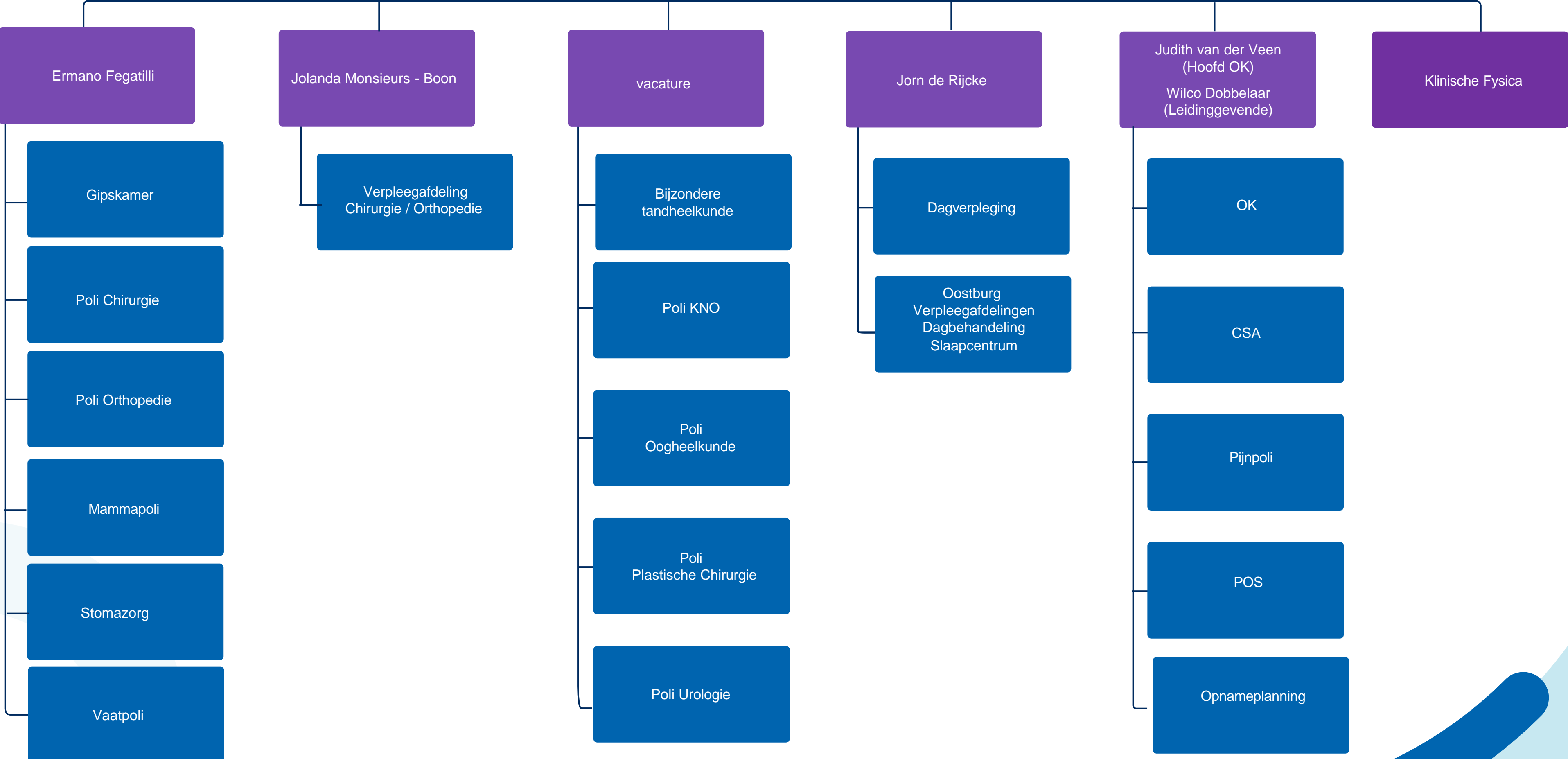
# Beschouwende zorg



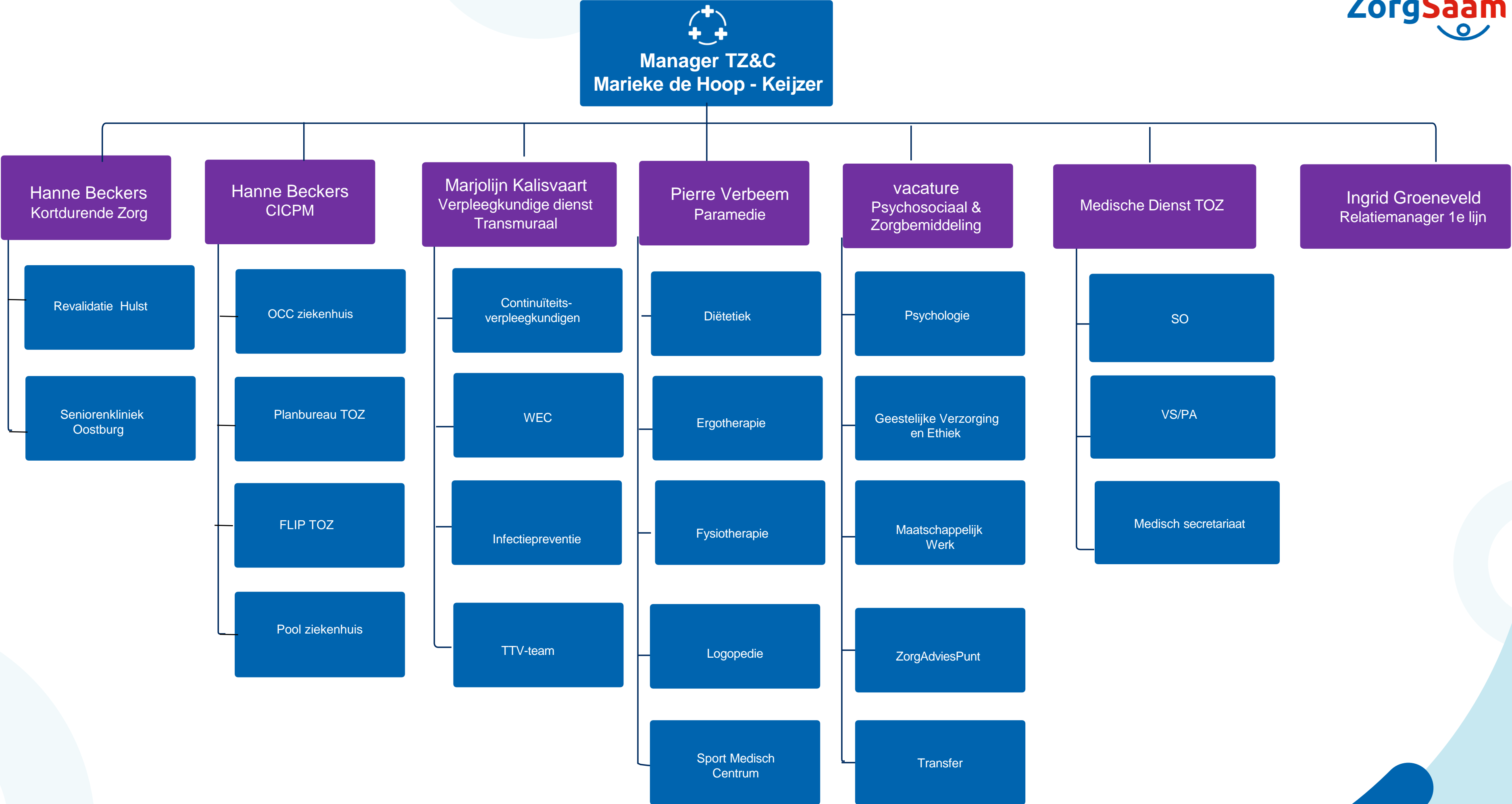
# Snijdende zorg

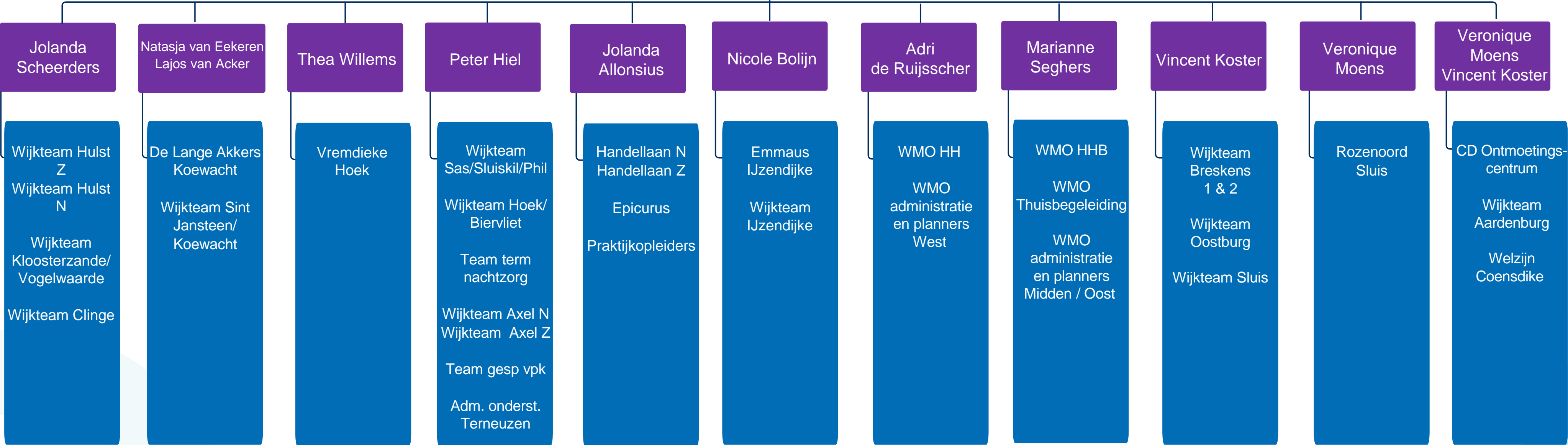


  
Manager Snijdende Zorg  
Jeffrey Kanters a.i.

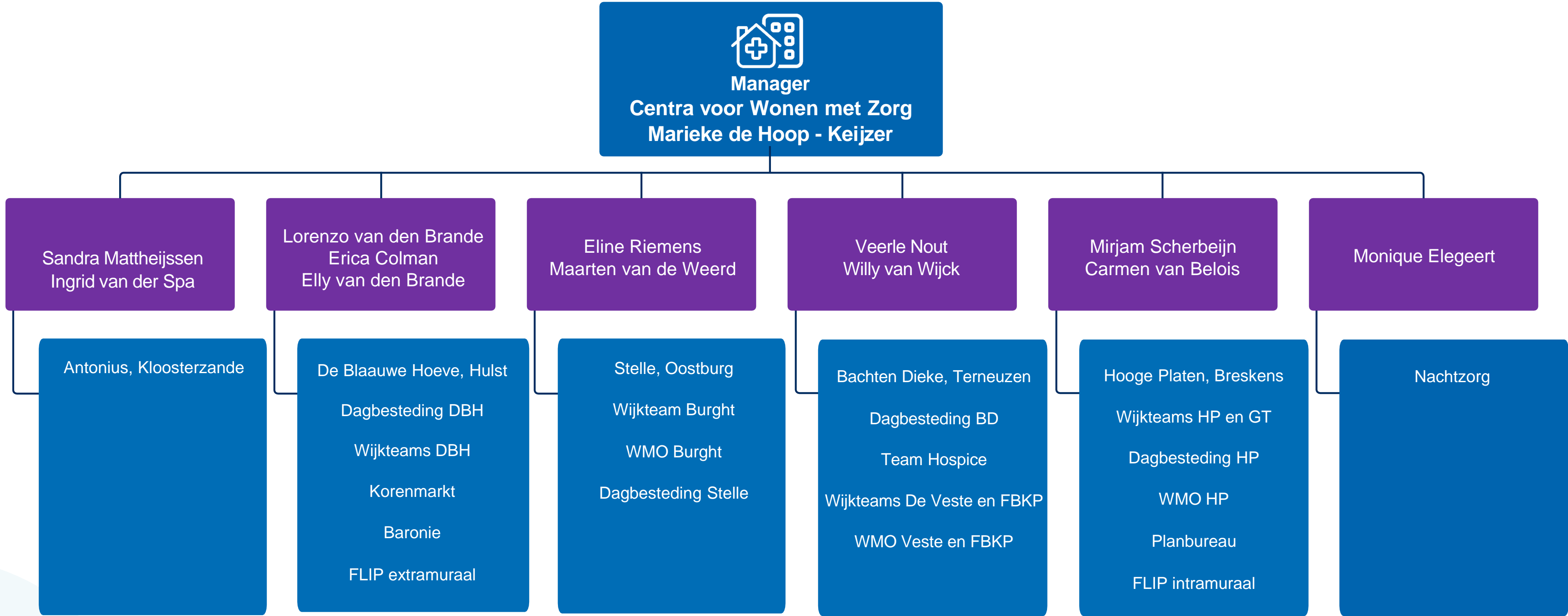


# Transmurale Zorg & Coördinatie



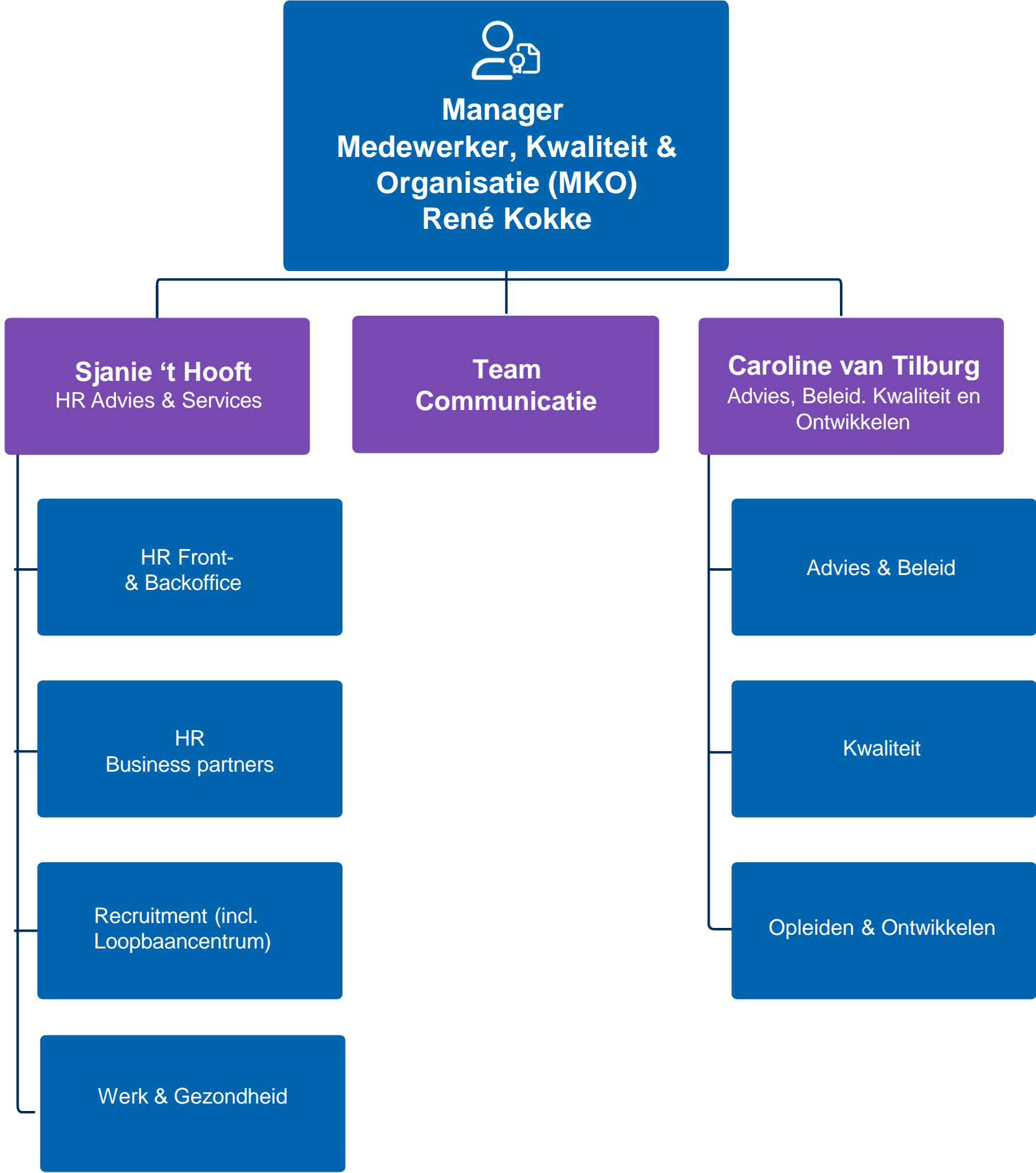


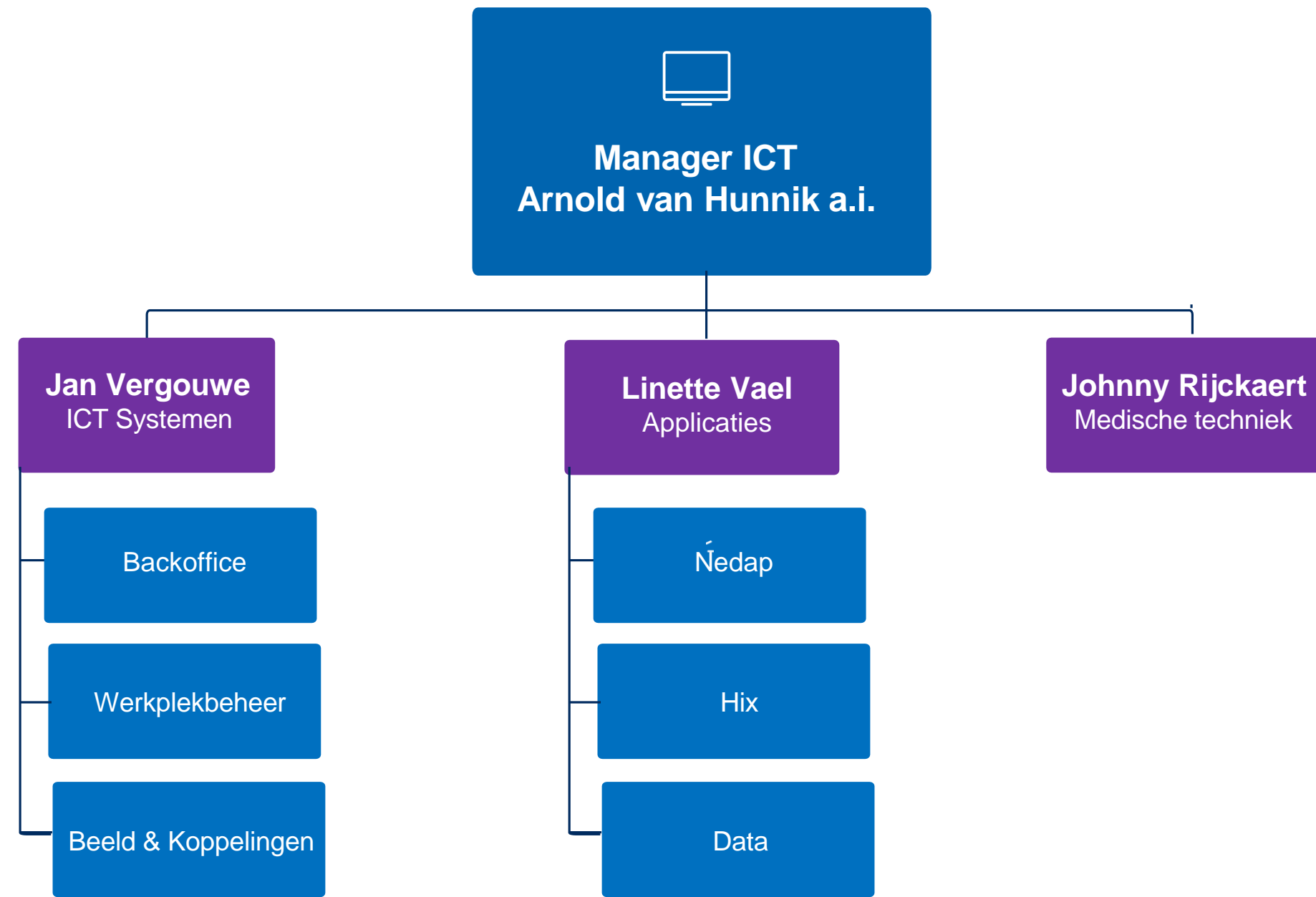
# Centra voor Wonen met Zorg



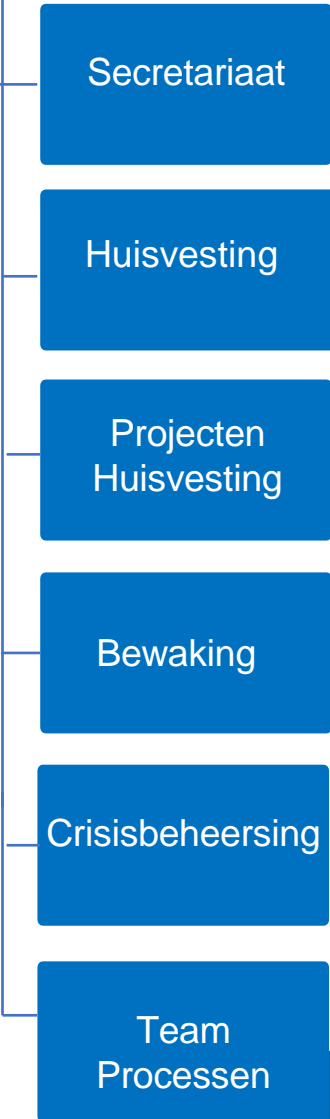
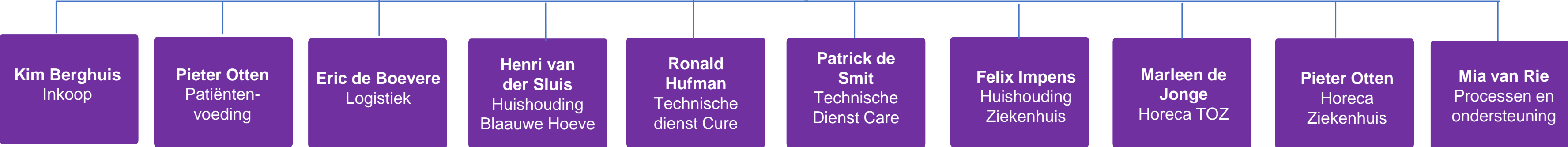


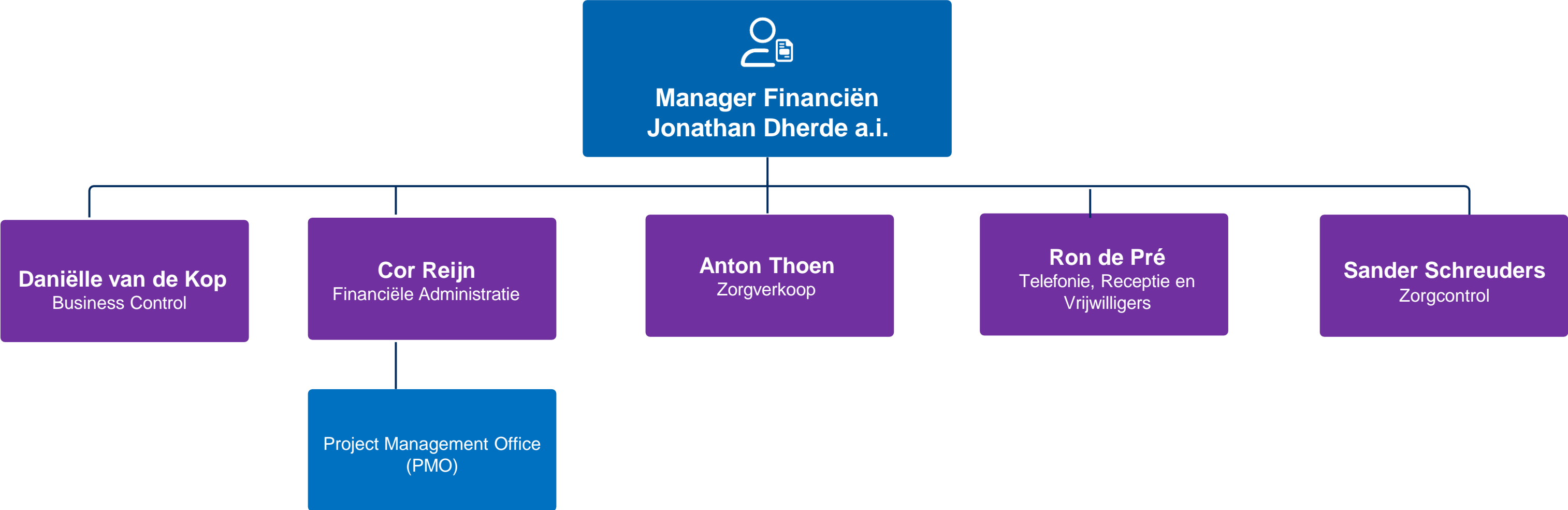
# Medewerker, Kwaliteit & Organisatie





# Facilitair & Vastgoed





# Programmastructuur

